



This bulletin provides a breakdown of all trauma<sup>1</sup> attendances at Ormskirk Paediatric Accident and Emergency department (AED) and Minor Injury Unit between September 2008 and August 2009.

Figure 1 illustrates the number of trauma attendances by month of attendance. Trauma attendance peaked in September (n=1,357), with December (n=764) having the least number of trauma attendances.

**Figure 1: Total number of trauma attendances by month, September 2008 to August 2009**

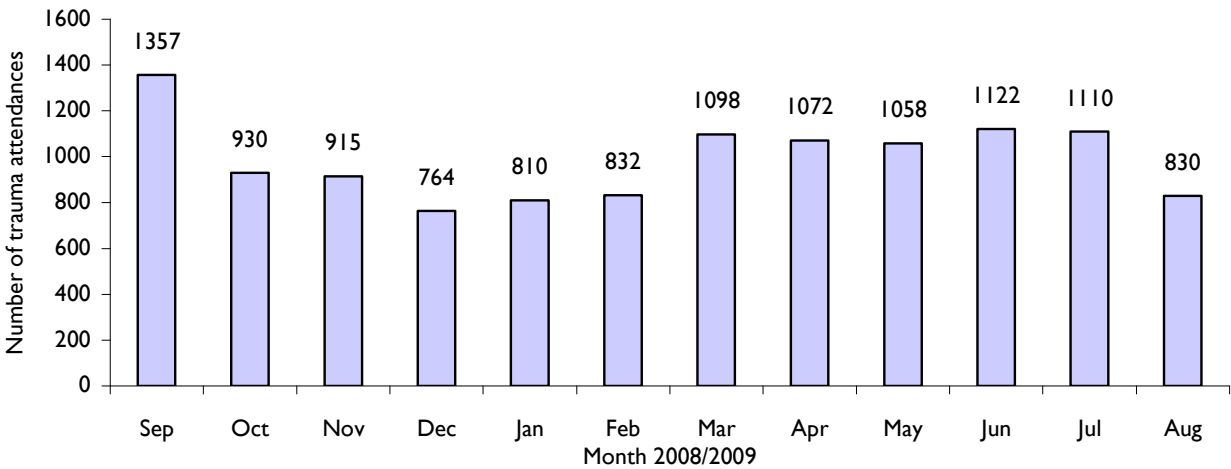


Figure 2 illustrates trauma attendances by gender. For all months there were more male (55%) trauma attendances than female presenting at Ormskirk Paediatric AED and Minor Injury Unit.

**Figure 2: Gender of trauma attendances by month, September 2008 to August 2009**

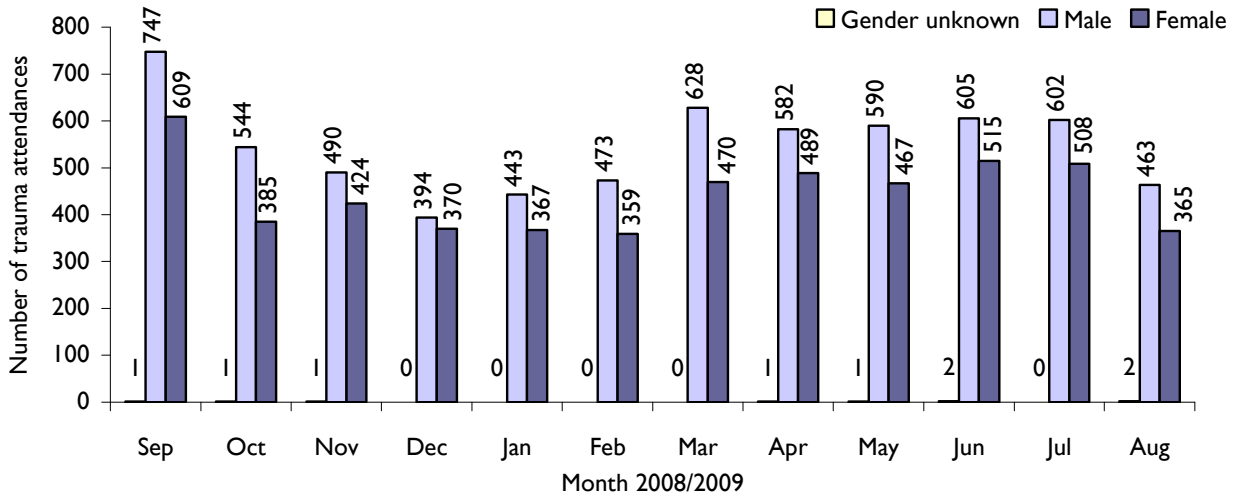


Figure 3 presents the age group of trauma attendances. Across the whole year around four in ten (43%) trauma attendances were made by people under the age of 15 years.

**Figure 3: Age group of trauma attendances by month, September 2008 to August 2009**

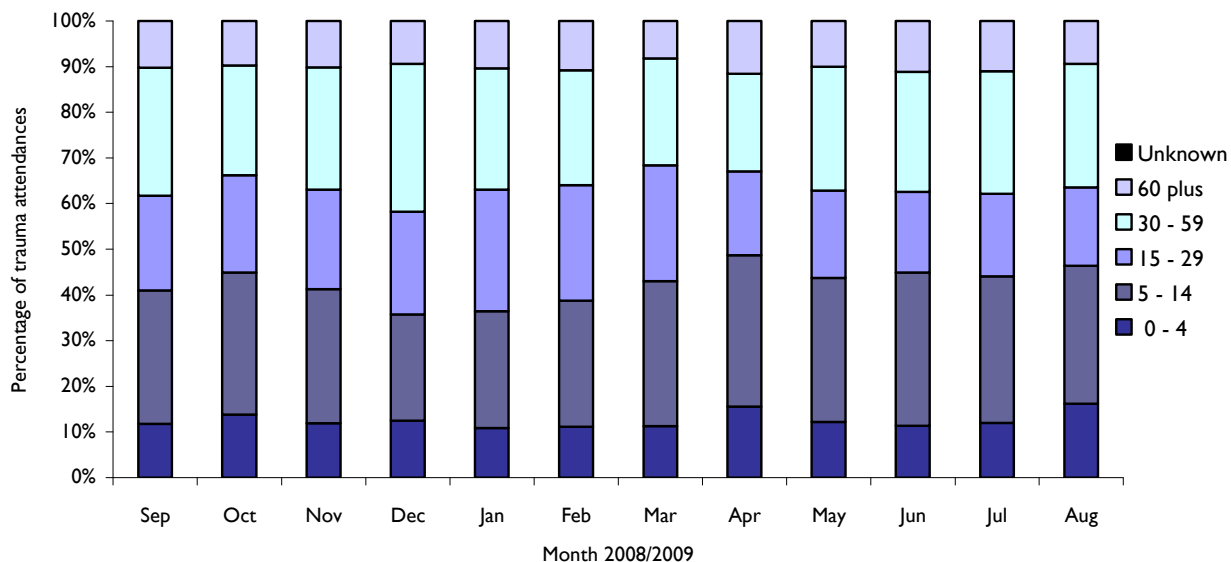


Table 1 details the injury group of trauma attendances. The most common cause of injury was by other accident (78%). Of those attendances where an injury group was specified 59% were sports injuries and 29% were road traffic accidents.

**Table 1: Trauma attendances by injury group, September 2008 to August 2009<sup>ii</sup>**

Injury group	Sep	Oct	Nov	Dec	Jan	Feb	Mar	Apr	May	Jun	Jul	Aug	Total	%
Other accident	1156	714	649	616	616	612	749	843	758	903	940	684	9240	78
Sports injury	104	131	149	61	128	147	247	140	173	132	88	70	1570	13
Road traffic accident	77	58	86	65	45	50	71	59	99	62	57	55	784	7
Assault	14	13	19	7	10	12	13	16	19	17	16	14	170	1
Deliberate self-harm	6	14	11	15	11	11	17	11	9	5	8	7	125	1
Firework injury	<5	<5	<5	<5	<5	<5	<5	<5	<5	<5	<5	<5	9	0
<b>Total</b>	<b>1357</b>	<b>930</b>	<b>915</b>	<b>764</b>	<b>810</b>	<b>832</b>	<b>1098</b>	<b>1072</b>	<b>1058</b>	<b>1122</b>	<b>1110</b>	<b>830</b>	<b>11898</b>	<b>100</b>

Table 2 illustrates the source of referral for patients presenting with trauma injuries. The primary source of referral for trauma attendances identified was self-referral (44%).

**Table 2: Trauma attendances by source of referral, September 2008 to August 2009**

Source of referral	Sep	Oct	Nov	Dec	Jan	Feb	Mar	Apr	May	Jun	Jul	Aug	Total	%
Self referral	648	369	371	409	378	378	476	404	462	471	454	364	5184	44
Other	554	396	359	269	319	345	518	501	482	531	493	390	5157	43
Health care provider: same or other	136	131	145	62	85	71	67	122	90	98	143	62	1212	10
Unknown	<5	10	24	17	11	17	16	28	<5	<5	<5	<5	124	1
Emergency services	9	7	6	<5	12	12	10	13	13	11	10	6	110	1
GP	8	7	5	<5	<5	<5	<5	<5	7	6	<5	<5	58	0
Educational establishment	<5	9	<5	<5	<5	<5	5	<5	<5	<5	<5	<5	26	0
Work	<5	<5	<5	<5	<5	<5	<5	<5	<5	<5	<5	<5	13	0
Police	<5	<5	<5	<5	<5	<5	<5	<5	<5	<5	<5	<5	10	0
Local authority social services	<5	<5	<5	<5	<5	<5	<5	<5	<5	<5	<5	<5	<5	0
<b>Total</b>	<b>1357</b>	<b>930</b>	<b>915</b>	<b>764</b>	<b>810</b>	<b>832</b>	<b>1098</b>	<b>1072</b>	<b>1058</b>	<b>1122</b>	<b>1110</b>	<b>830</b>	<b>11898</b>	<b>100</b>

Table 3 presents trauma attendances by location of incident. Over four in ten (42%) of all trauma injuries occurred in the home, and 32% in a public place.

**Table 3: Trauma attendances by location of incident, September 2008 to August 2009**

Location	Sep	Oct	Nov	Dec	Jan	Feb	Mar	Apr	May	Jun	Jul	Aug	Total	%
Home	604	377	390	308	332	302	399	498	420	457	512	344	4943	42
Public place	412	248	240	242	224	282	342	343	400	358	370	350	3811	32
Other	135	131	121	85	93	100	142	113	97	113	75	82	1287	11
Educational establishment	108	112	117	71	100	87	160	67	79	119	87	<5	1110	9
Work	98	62	47	58	61	61	55	51	62	75	66	51	747	6
<b>Total</b>	<b>1357</b>	<b>930</b>	<b>915</b>	<b>764</b>	<b>810</b>	<b>832</b>	<b>1098</b>	<b>1072</b>	<b>1058</b>	<b>1122</b>	<b>1110</b>	<b>830</b>	<b>11898</b>	<b>100</b>

Table 4 shows the disposal method of trauma attendances; over half (53%) of attendees were discharged requiring no follow-up treatment.

**Table 4: Disposal method of all trauma attendees, September 2008 to August 2009**

Disposal	Sep	Oct	Nov	Dec	Jan	Feb	Mar	Apr	May	Jun	Jul	Aug	Total	%
Discharged - did not require any follow-up treatment	628	497	456	394	437	420	644	572	589	603	587	468	6295	53
Referred to other health care professional	376	222	254	197	186	211	203	239	237	241	235	158	2759	23
Referred to fracture clinic	193	101	87	82	95	106	134	126	106	152	145	104	1431	12
Discharged – follow-up treatment to be provided by GP	73	42	60	41	42	40	58	54	70	54	84	40	658	6
Transferred to other health care provider	41	27	17	17	20	13	14	26	21	20	20	29	265	2
Admitted to hospital bed	20	23	20	10	10	25	20	30	21	21	25	18	243	2
Referred to other out-patient clinic	19	14	14	11	12	12	11	11	8	15	11	9	147	1
Left department before being treated	<5	<5	<5	6	<5	<5	11	12	<5	9	<5	<5	60	1
Referred to A&E clinic	<5	<5	<5	<5	<5	<5	<5	<5	<5	7	<5	<5	35	0
Left department having refused treatment	<5	<5	<5	<5	<5	<5	<5	<5	<5	<5	<5	<5	5	0
Unknown	<5	<5	<5	<5	<5	<5	<5	<5	<5	<5	<5	<5	<5	0
Died in department	<5	<5	<5	<5	<5	<5	<5	<5	<5	<5	<5	<5	<5	0
Other	<5	<5	<5	<5	<5	<5	<5	<5	<5	<5	<5	<5	<5	0
<b>Total</b>	<b>1357</b>	<b>930</b>	<b>915</b>	<b>764</b>	<b>810</b>	<b>832</b>	<b>1098</b>	<b>1072</b>	<b>1058</b>	<b>1122</b>	<b>1110</b>	<b>830</b>	<b>11898</b>	<b>100</b>

Assault attendees presenting at the Ormskirk AED between September 2008 and August 2009 were mainly male (66%) and the majority (43%) were aged between 15 and 29 years of age. The primary location of assault was in the public place (59%).

Published September 2009  
 Dan Hungerford (TIIG Analyst)  
 Centre for Public Health, Research Directorate, Faculty of Health and Applied Social Sciences, Liverpool John Moores University  
 5<sup>th</sup> Floor, Kingsway House, Liverpool, L3 2AJ  
 Tel: 0151 231 8724 Email: [d.j.hungerford@ljmu.ac.uk](mailto:d.j.hungerford@ljmu.ac.uk)  
 Website: [www.tiig.info](http://www.tiig.info) (please note that all data requests should be made through the TIIG website)

<sup>i</sup>Trauma refers to all A&E attendances presenting as a result of an intentional or unintentional injury.

<sup>ii</sup> Please note that all numbers less than five have been suppressed in line with patient confidentiality and if there is only one number <5 in a category then two numbers will be suppressed at the next level (e.g. <6) in order to prevent back calculations from totals.